

XYit

Data Capture for the Professional

Introduction

With XYit graphs, plans, and maps can be analysed into their original co-ordinates, saving hours or days of tedious work. XYit accurately converts selected image features such as lines or points - ready for you to export to a word processor or spreadsheet as a table. Even if your image contains dates, logarithmic axes or Mercator scaling, XYit will still obtain the **original** values from the image correctly.

Images

The image files can be a diagram, map, nautical chart, graph or even a picture. Whether the image has been scanned, is from the internet, or is displayed on your screen in **any** other application, you can capture the data using XYit.

New Features

XYit includes support for over 40 image formats, with improved image manipulation and calibration and a totally new user-friendly setup facility. And, with the new four point calibration, even if your image is distorted, skewed, squashed or rotated, XYit still gives you the correct values.

Applications

- Financial Graphs - stock prices
- Nautical Charts - survey maps
- Grid Maps - UK Ordnance Survey
- Building Plans, Aerial Photographs
- Engineering Diagrams
- Scientific Graphs
- Hydrographic Analysis eg Tidal Survey
- Spectral Analysis e.g. Infra-red
- Chromatograms gene ID

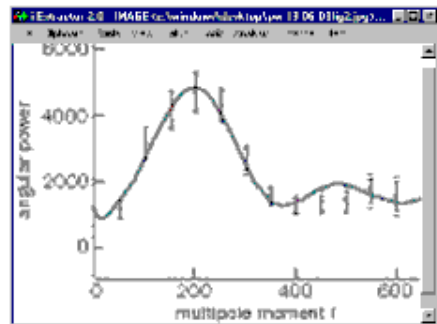
www.geomatix.net



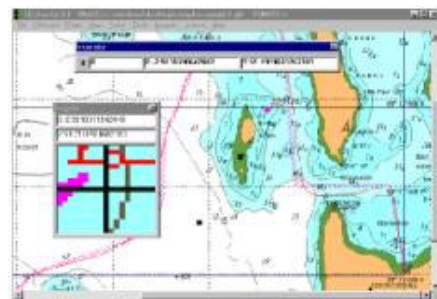
Business & Finance



Survey & Planning



Science & Engineering



Cartography & Mapping

Specification

Image

Sources File, Clipboard, Screen

Functions Rotate, Zoom-In/Zoom-Out (on cursor), scroll, drag

Formats BMP, CALS, DCX, DIB, GIF, HRZ, ICO, JPG, MOD:CA, PBM, PCX, PGM, PIC, PNG, PPM, RLE, TGA, TIF, WMF, WPG

Data Export

Destinations File, Clipboard

Format: ASCII X, Y Co-ordinate pairs -tab / CRLF delimited

Mapping

2 Corner Rectangular

3 Corner Linear

4 Corner Non-Linear

3 Arbitrary Known Points Linear

Axes Types

X Axis Linear, Logarithmic, Date, Mercator Longitude

Y Axis Linear, Logarithmic, Mercator Latitude

Point Digitising

Manual Mouse clicks generate points in ORIGINAL co-ordinates

Automatic Image Scanning / Line Following based on pixel colour

Point Removal Automatic Thinning with user specified tolerance

Viewer

Magnified, Points Readout in Real Co-ordinates

Analysis

Data points Analysis, Length, Area, Standard Deviation

Help

Fully Interactive Windows Help

System Resource

Download Size 3.0 Mb

Operating 6Mb HDD 16Mb RAM

Operating Systems

Windows 95, 98, 2000, NT, ME, XP

See www.geomatix.net for price and download details

Geomatix Ltd UK Company Registration No: 028955777